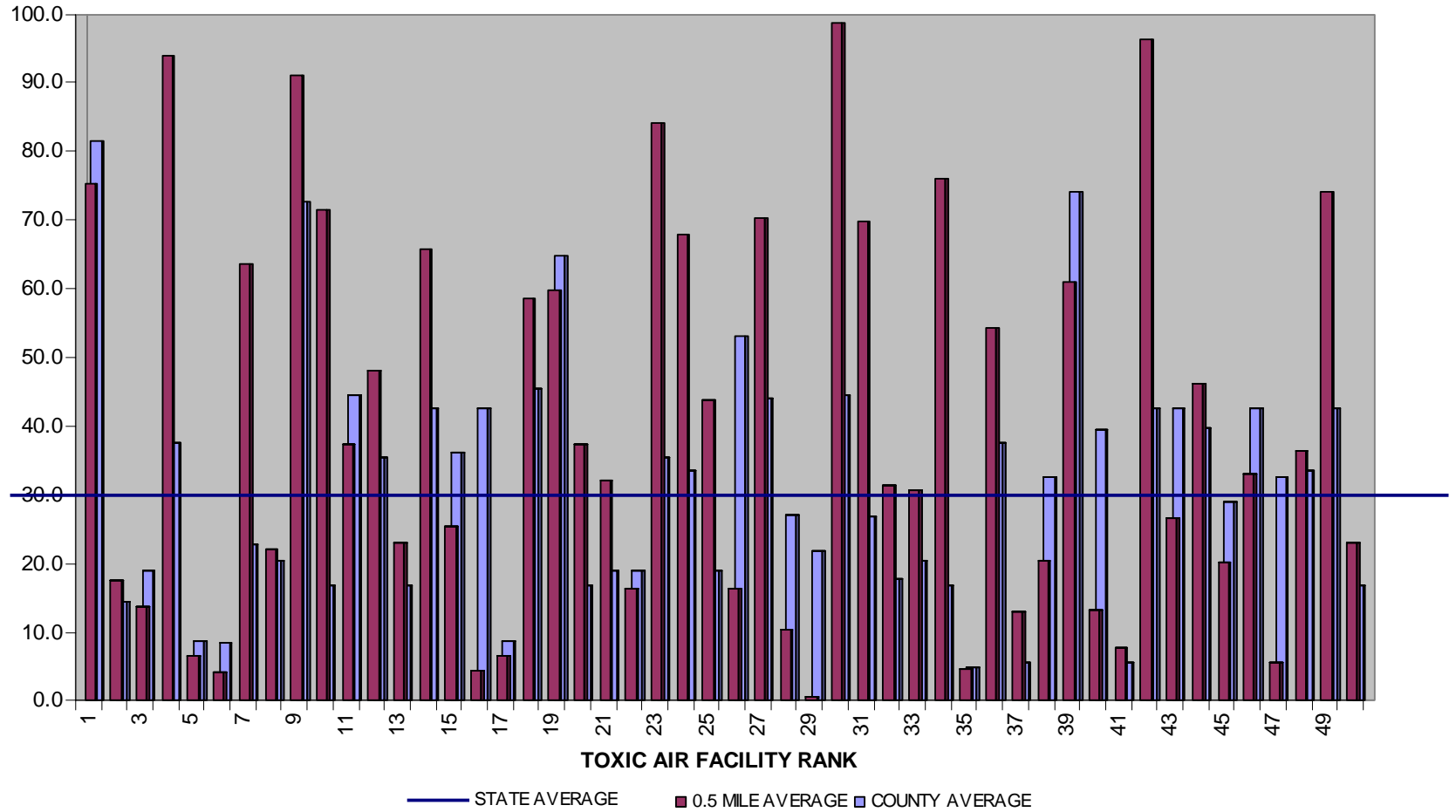


Race, Poverty, and Environmental Burdens: Injustice in Alabama

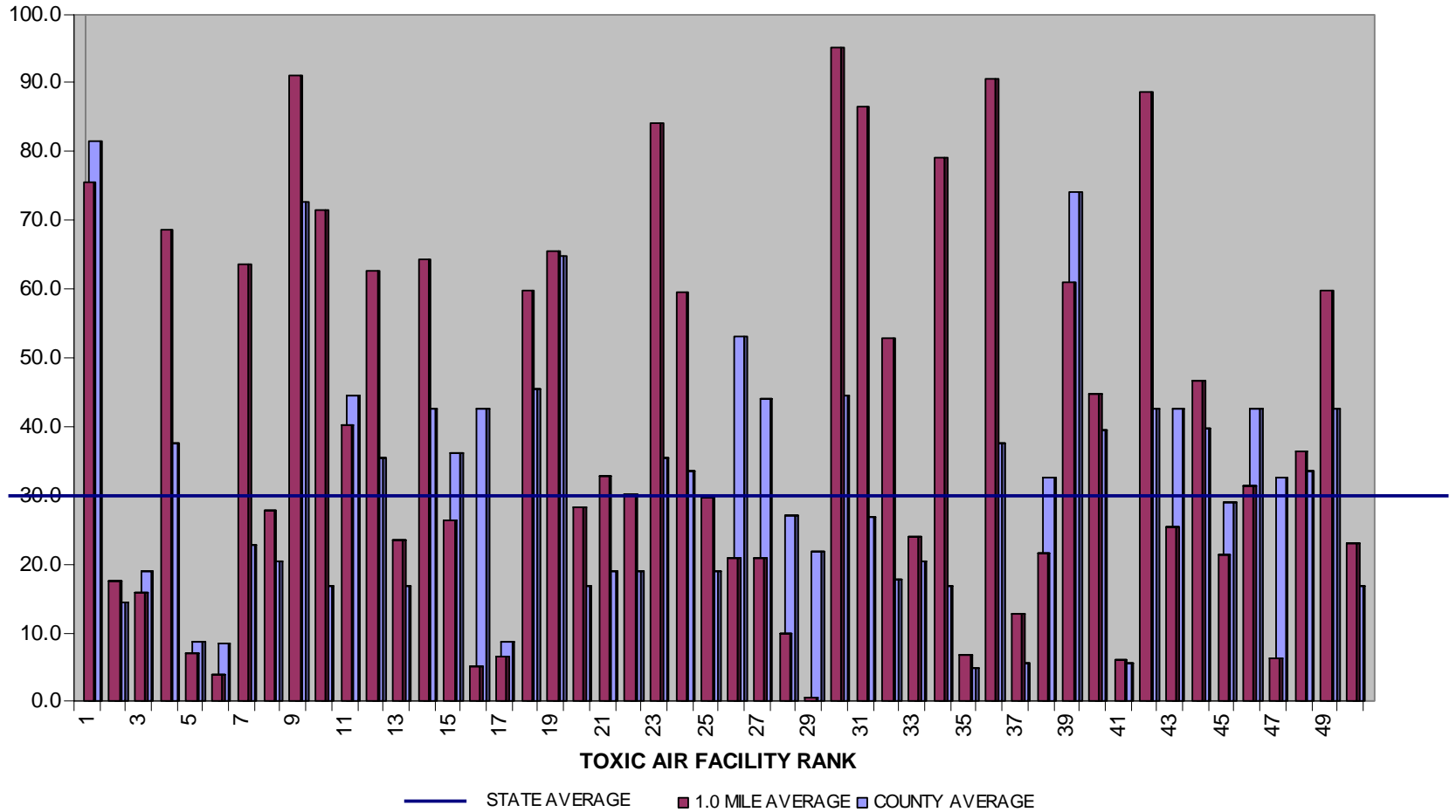
Part II Toxic Air Pollution Facilities

Prepared by
Legal Environmental Assistance Foundation, Inc.
for
Alabama African-American Environmental Justice Action Network
and
ADEM Reform Coalition
June 2004 (Revised Oct. 2004)

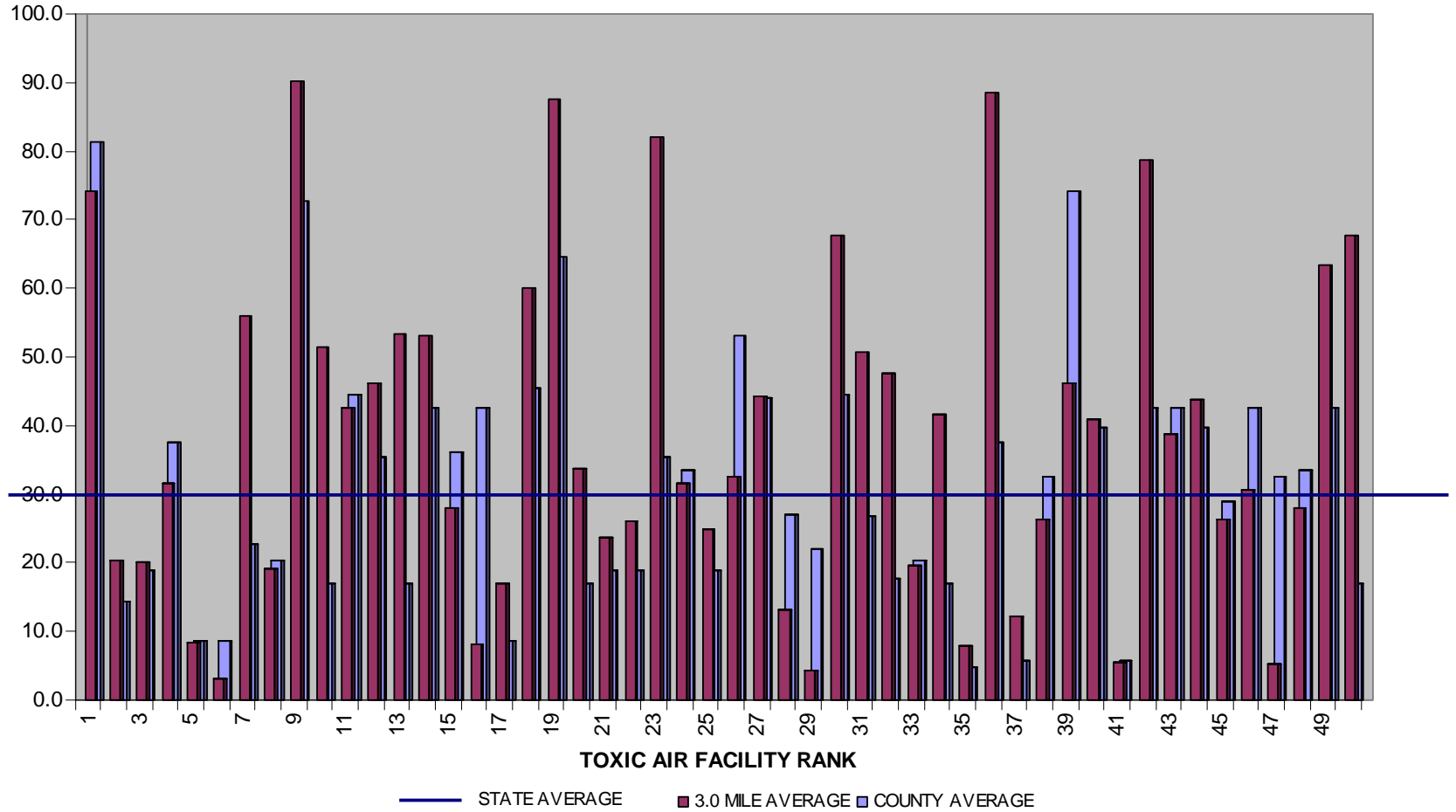
PERCENTAGE MINORITY POPULATION WITHIN 0.5 MILES OF TOP 50 TOXIC AIR POLLUTION FACILITIES IN ALABAMA



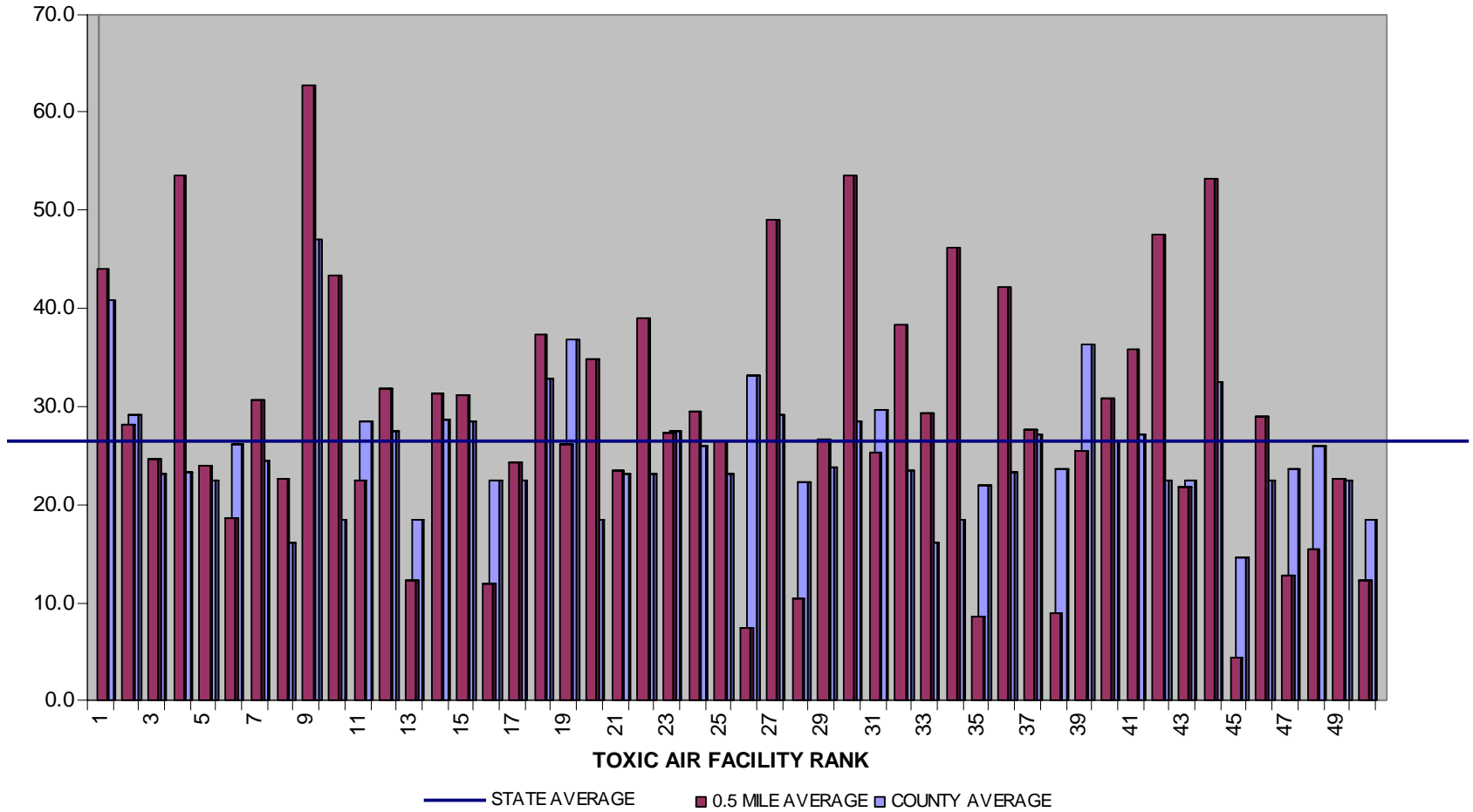
PERCENTAGE MINORITY POPULATION WITHIN 1.0 MILES OF TOP 50 TOXIC AIR POLLUTION FACILITIES IN ALABAMA



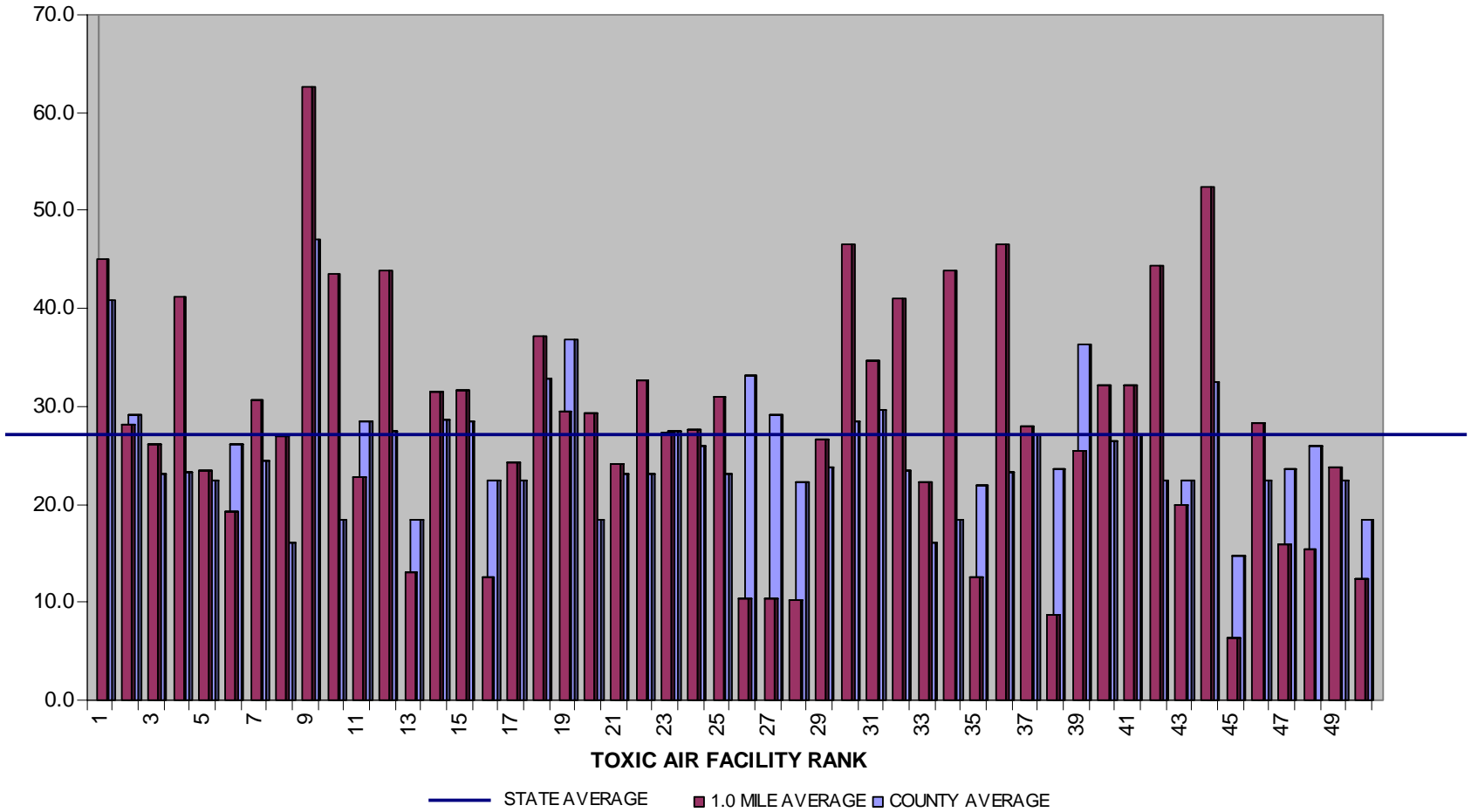
PERCENTAGE MINORITY POPULATION WITHIN 3.0 MILES OF TOP 50 TOXIC AIR POLLUTION FACILITIES IN ALABAMA



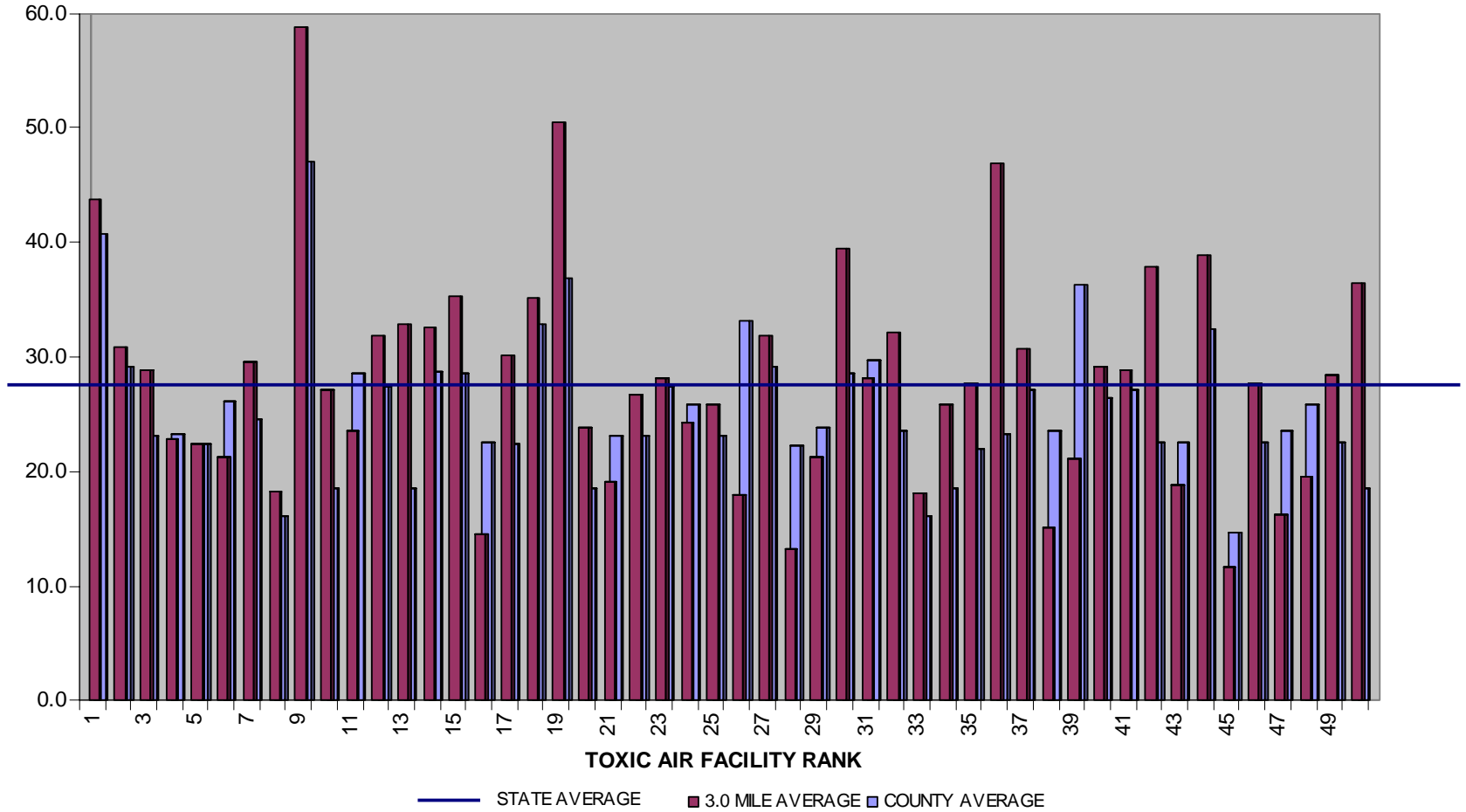
**PERCENTAGE HOUSEHOLDS WITH INCOME UNDER \$15000
WITHIN 0.5 MILES OF TOP 50 TOXIC AIR POLLUTION FACILITIES IN ALABAMA**



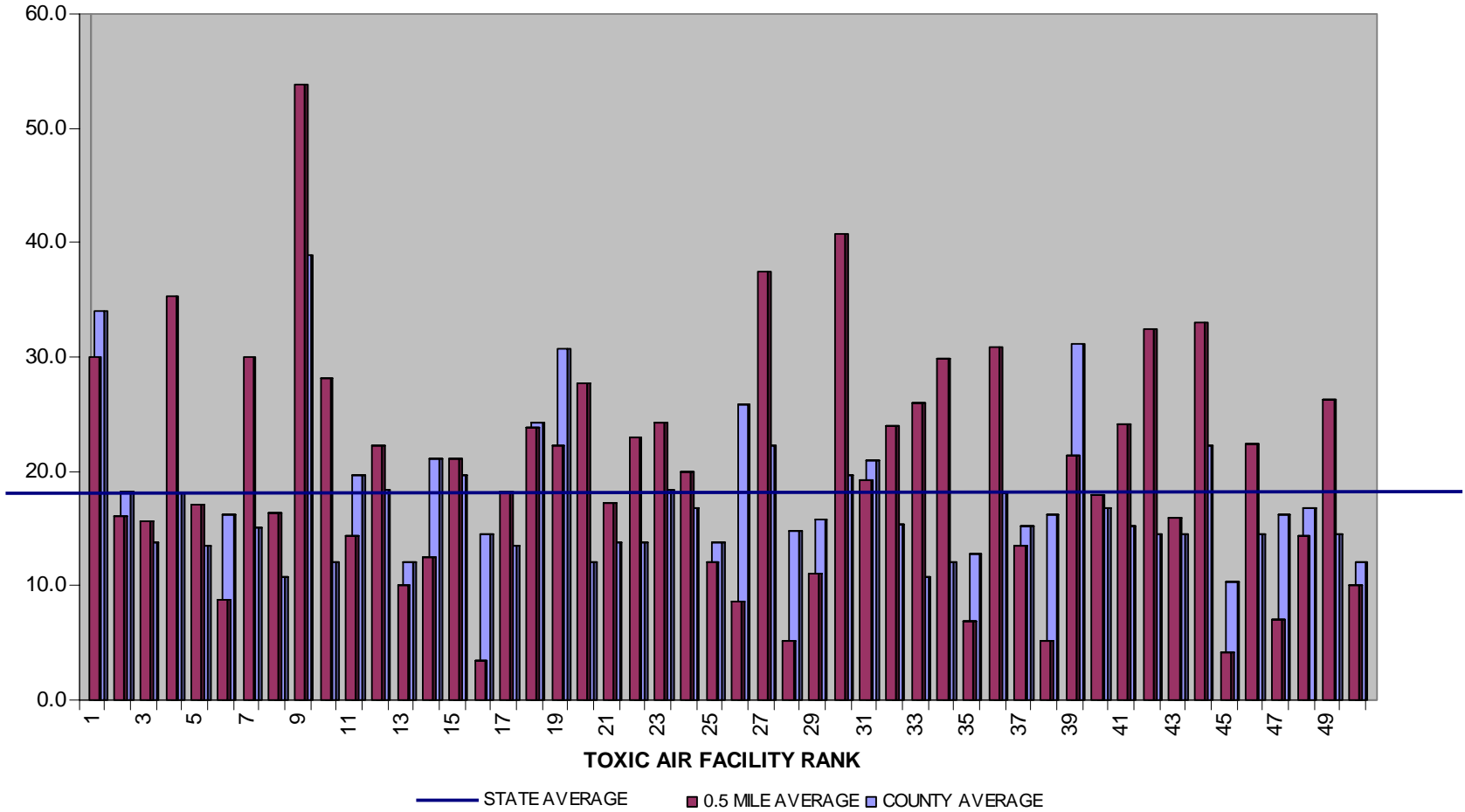
**PERCENTAGE HOUSEHOLDS WITH INCOME UNDER \$15000
WITHIN 1.0 MILES OF TOP 50 TOXIC AIR POLLUTION FACILITIES IN ALABAMA**



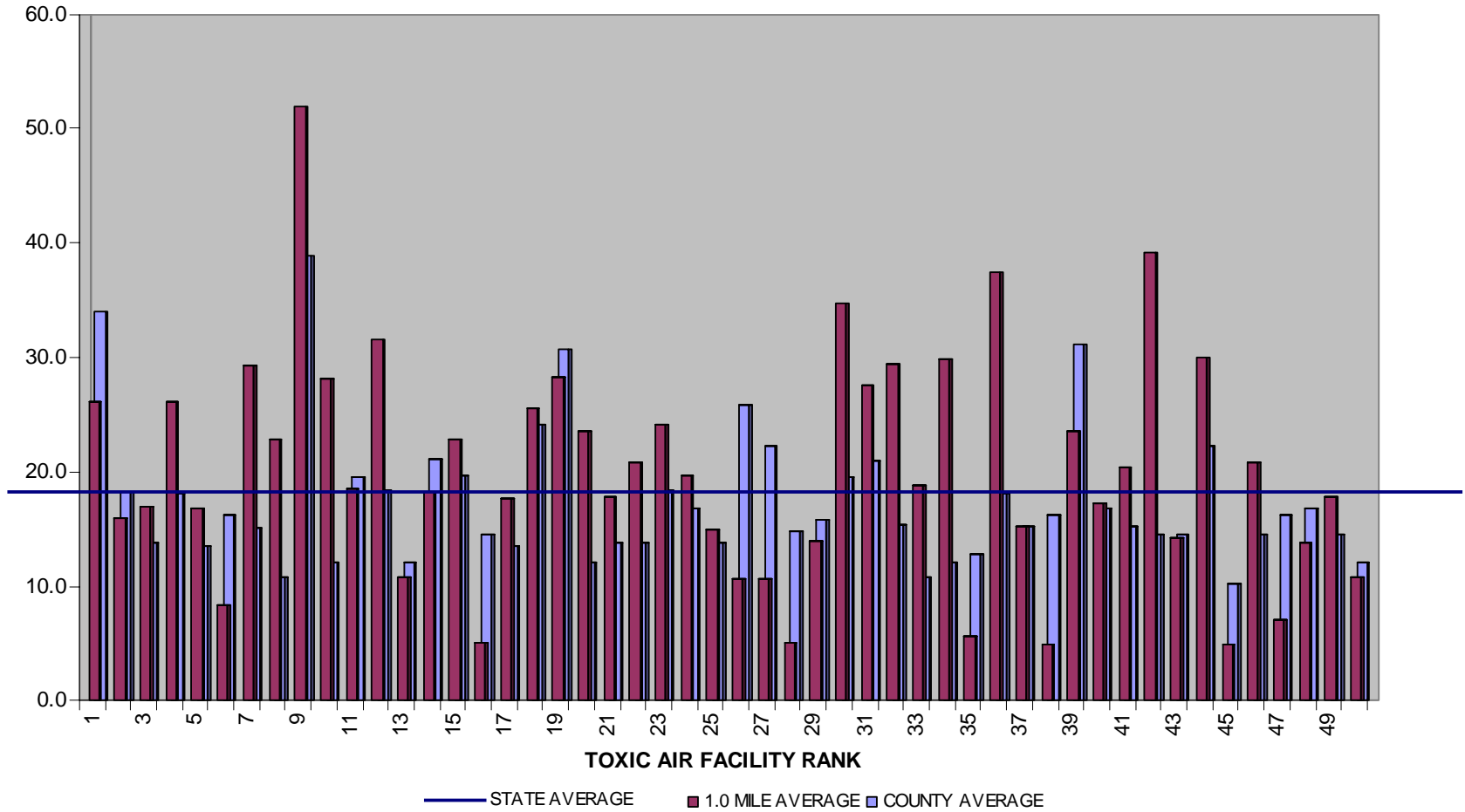
**PERCENTAGE HOUSEHOLDS WITH INCOME UNDER \$15000
WITHIN 3.0 MILES OF TOP 50 TOXIC AIR POLLUTION FACILITIES IN ALABAMA**



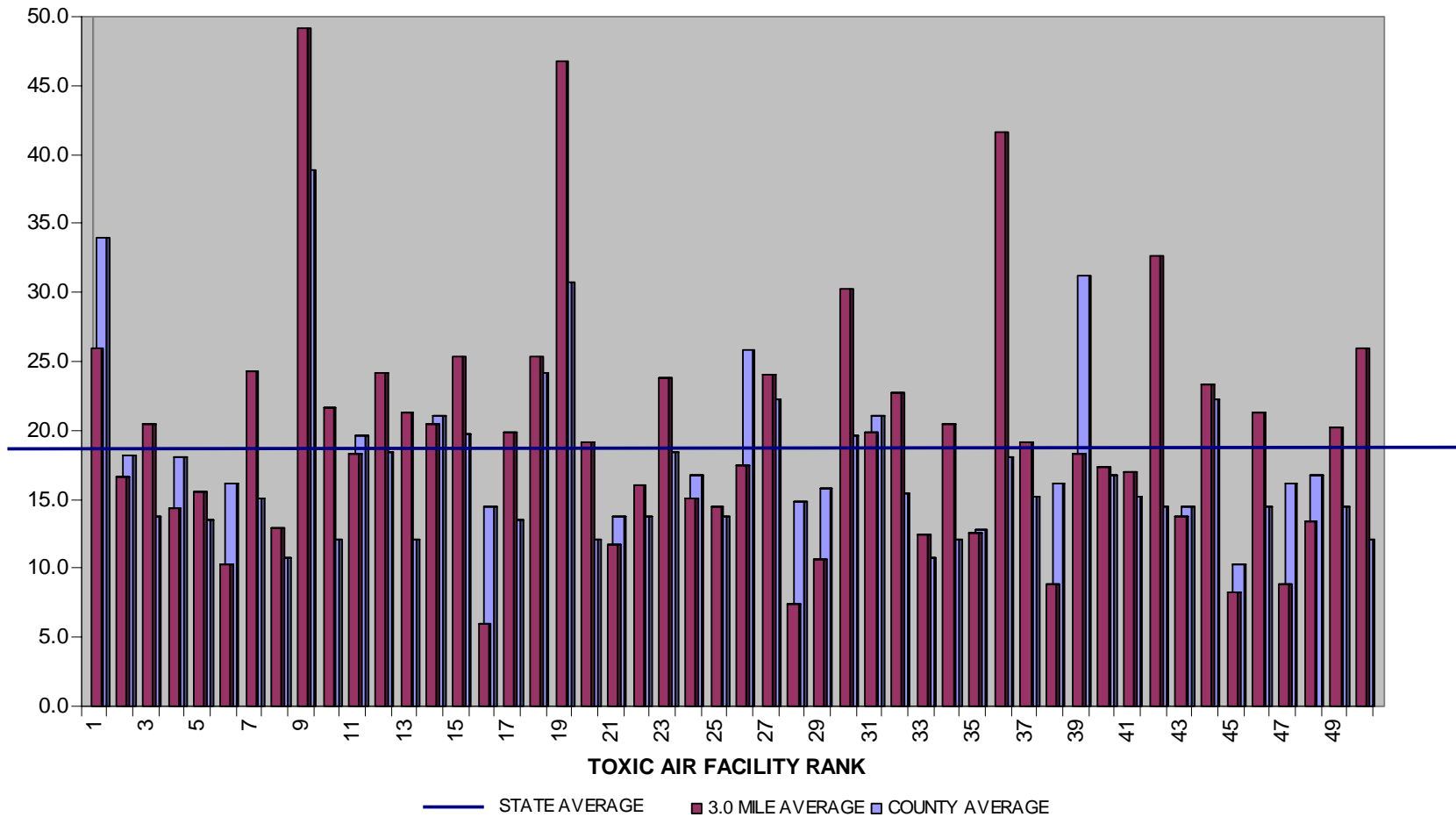
**PERCENTAGE POPULATION WITH INCOME BELOW POVERTY LEVEL
WITHIN 0.5 MILES OF TOP 50 TOXIC AIR POLLUTION FACILITIES IN ALABAMA**



**PERCENTAGE POPULATION WITH INCOME BELOW POVERTY LEVEL
WITHIN 1.0 MILES OF TOP 50 TOXIC AIR POLLUTION FACILITIES IN ALABAMA**



**PERCENTAGE POPULATION WITH INCOME BELOW POVERTY LEVEL
WITHIN 3.0 MILES OF TOP 50 TOXIC AIR POLLUTION FACILITIES IN ALABAMA**



TOP 50 TOXIC AIR POLLUTION FACILITIES IN ALABAMA

NUMBER OF FACILITIES WHERE MINORITY POPULATION SURROUNDING FACILITY EXCEEDS 35.6% (1.2X STATE-WIDE AVERAGE OF 29.7%)		
3.0 Miles	1.0 Miles	0.5 Miles
24/50 (48%)	23/50 (46%)	24/50 (48%)

NUMBER OF FACILITIES WHERE LOW INCOME (LESS THAN \$15,000) HOUSEHOLDS SURROUNDING FACILITY EXCEEDS 27.0% (1.2X STATE-WIDE AVERAGE OF 22.5%)		
3.0 Miles	1.0 Miles	0.5 Miles
28/50 (56%)	27/50 (54%)	26/50 (52%)

NUMBER OF FACILITIES WHERE POVERTY POPULATION SURROUNDING FACILITY EXCEEDS 18.8% (1.2X STATE-WIDE AVERAGE OF 15.7%)		
3.0 Miles	1.0 Miles	0.5 Miles
26/50 (52%)	24/50 (48%)	26/50 (52%)