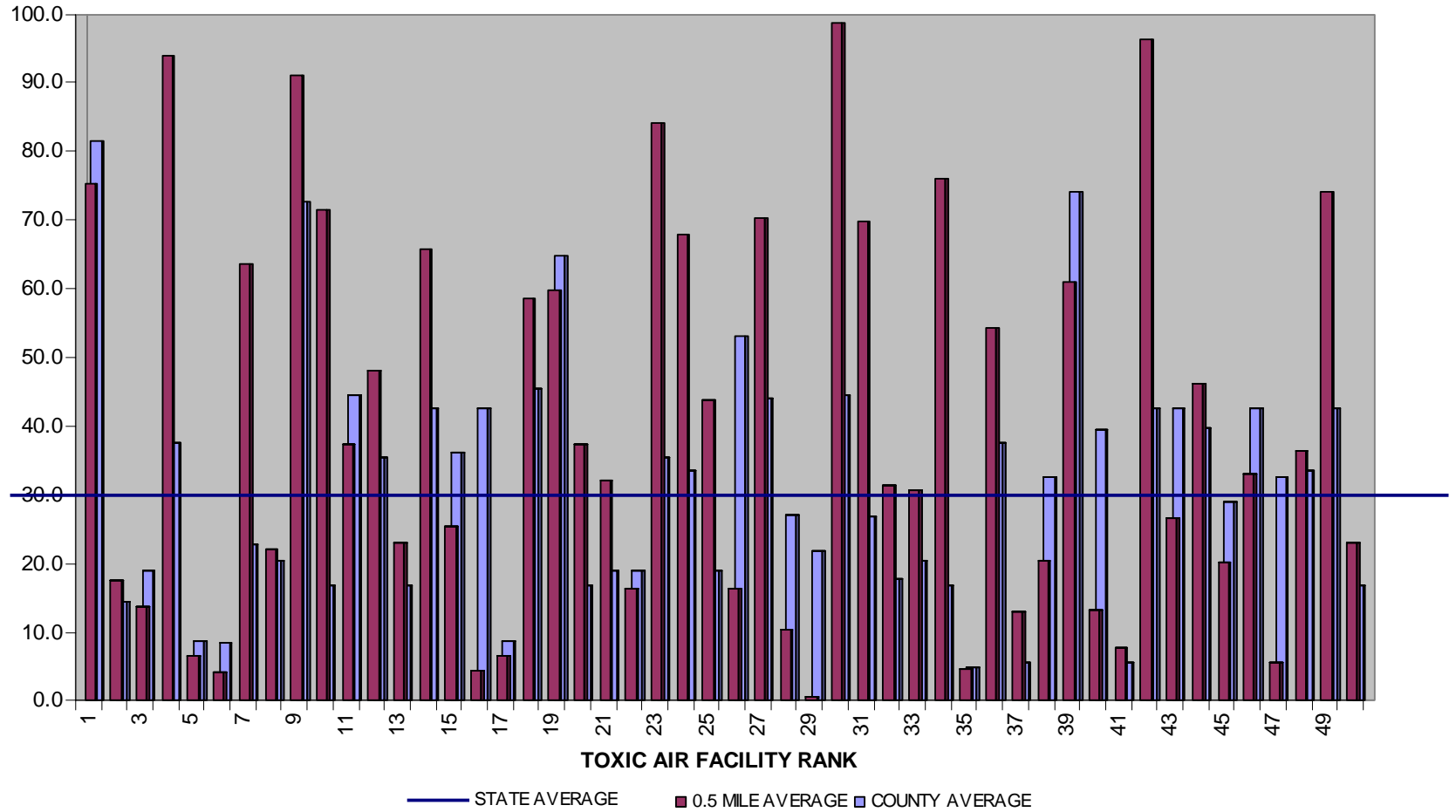


# Race, Poverty, and Environmental Burdens: Injustice in Alabama

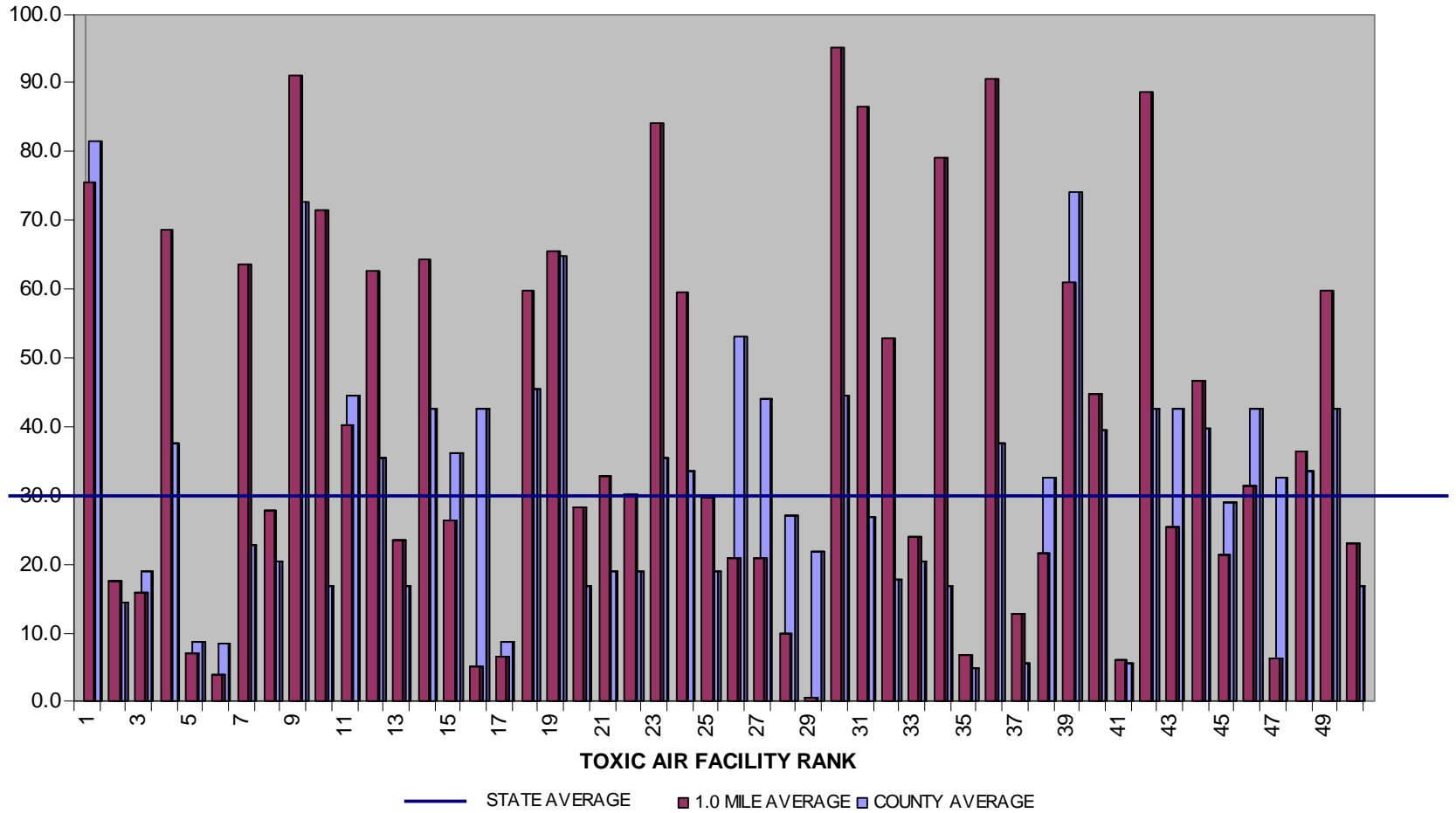
## Part II Toxic Air Pollution Facilities

Prepared by  
Legal Environmental Assistance Foundation, Inc.  
for  
Alabama African-American Environmental Justice Action Network  
and  
ADEM Reform Coalition  
June 2004 (Revised Oct. 2004)

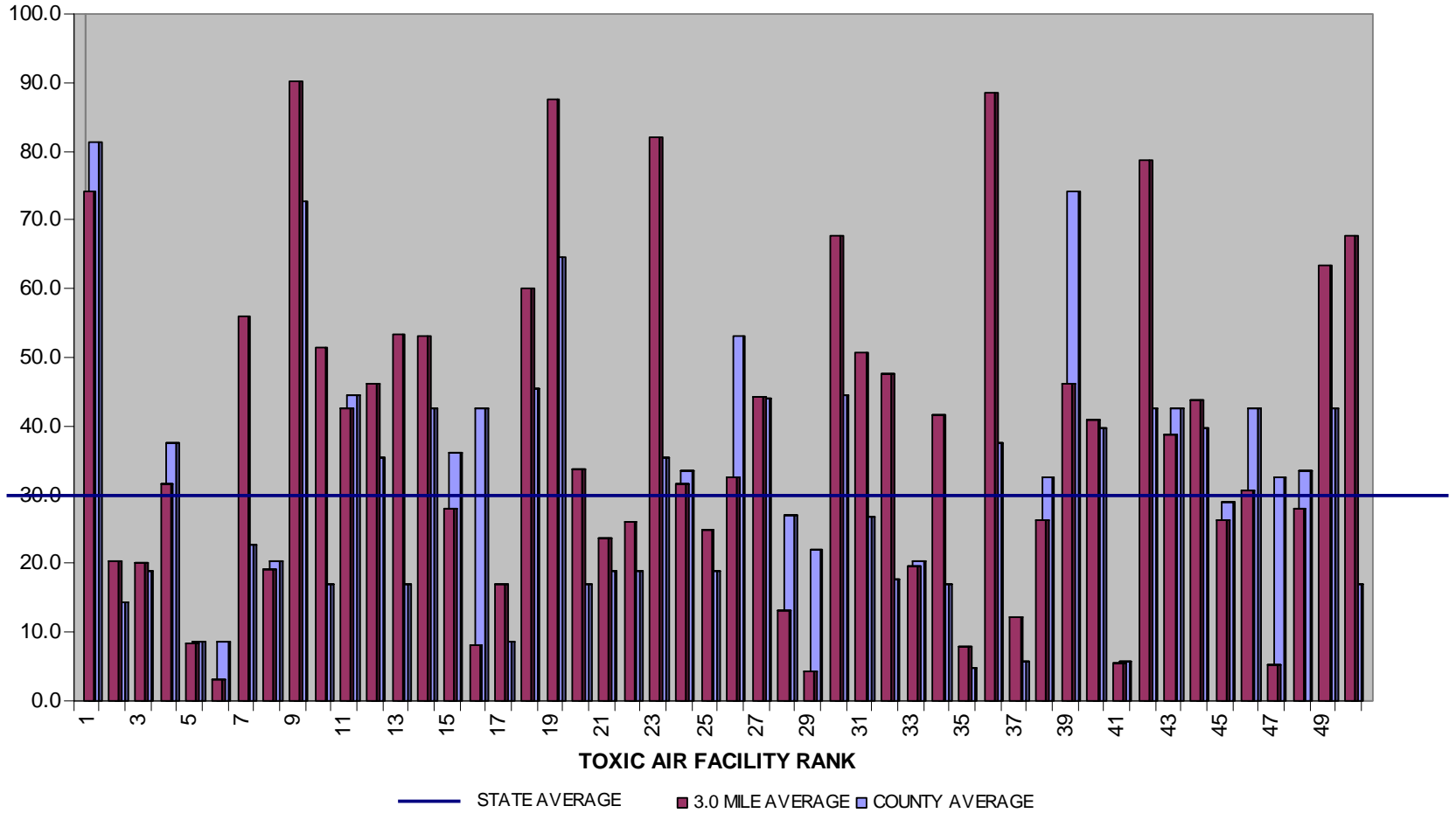
## PERCENTAGE MINORITY POPULATION WITHIN 0.5 MILES OF TOP 50 TOXIC AIR POLLUTION FACILITIES IN ALABAMA



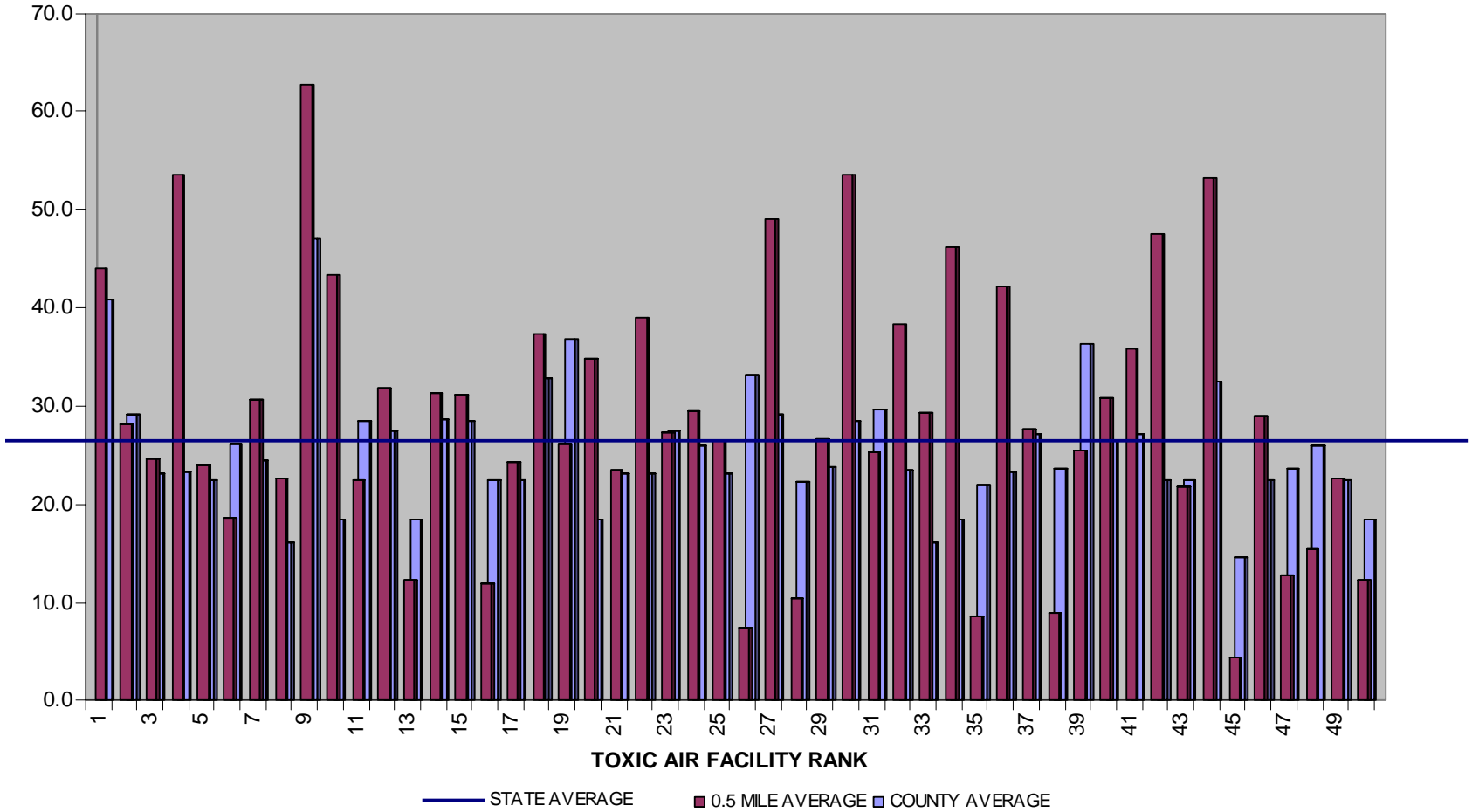
## PERCENTAGE MINORITY POPULATION WITHIN 1.0 MILES OF TOP 50 TOXIC AIR POLLUTION FACILITIES IN ALABAMA



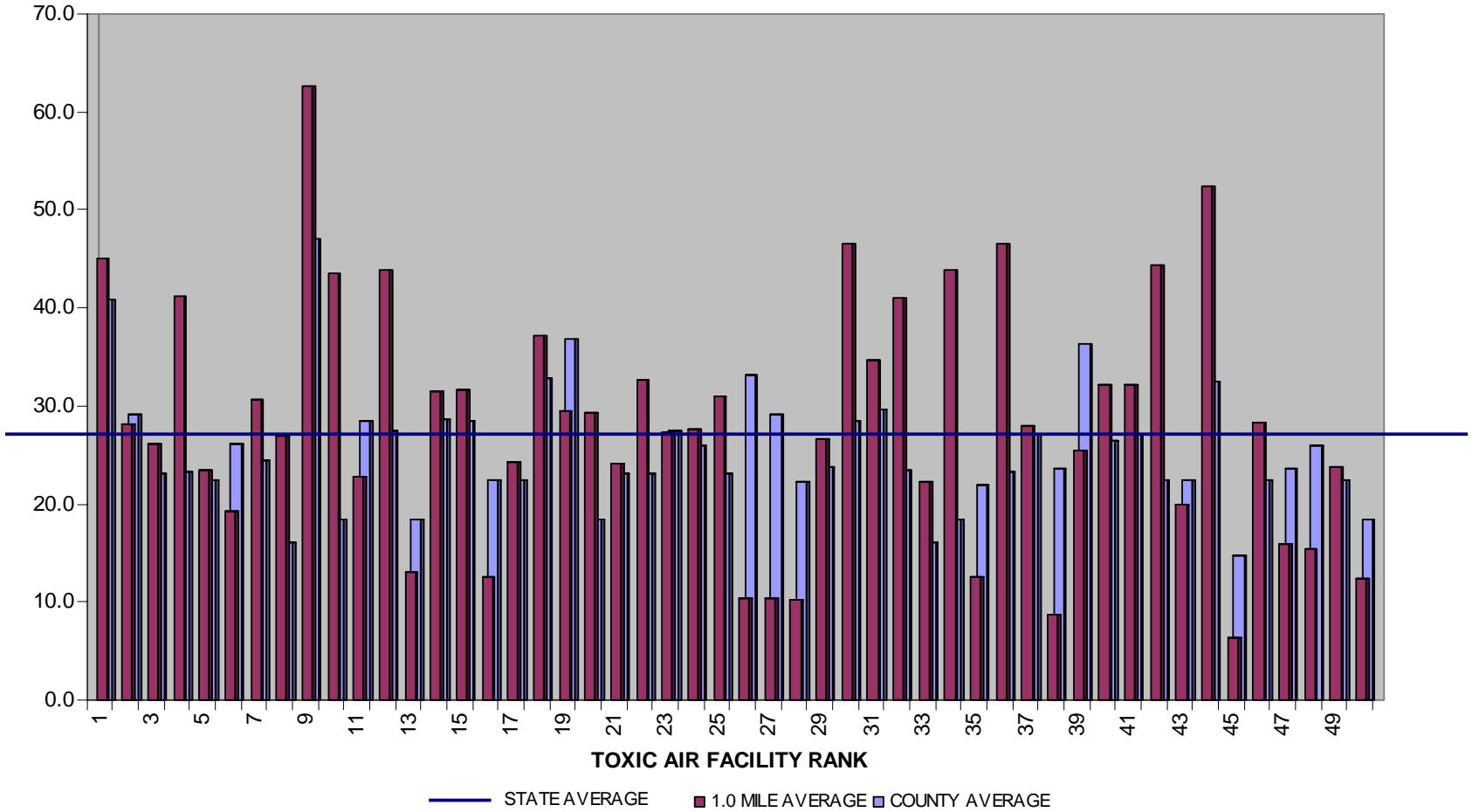
## PERCENTAGE MINORITY POPULATION WITHIN 3.0 MILES OF TOP 50 TOXIC AIR POLLUTION FACILITIES IN ALABAMA



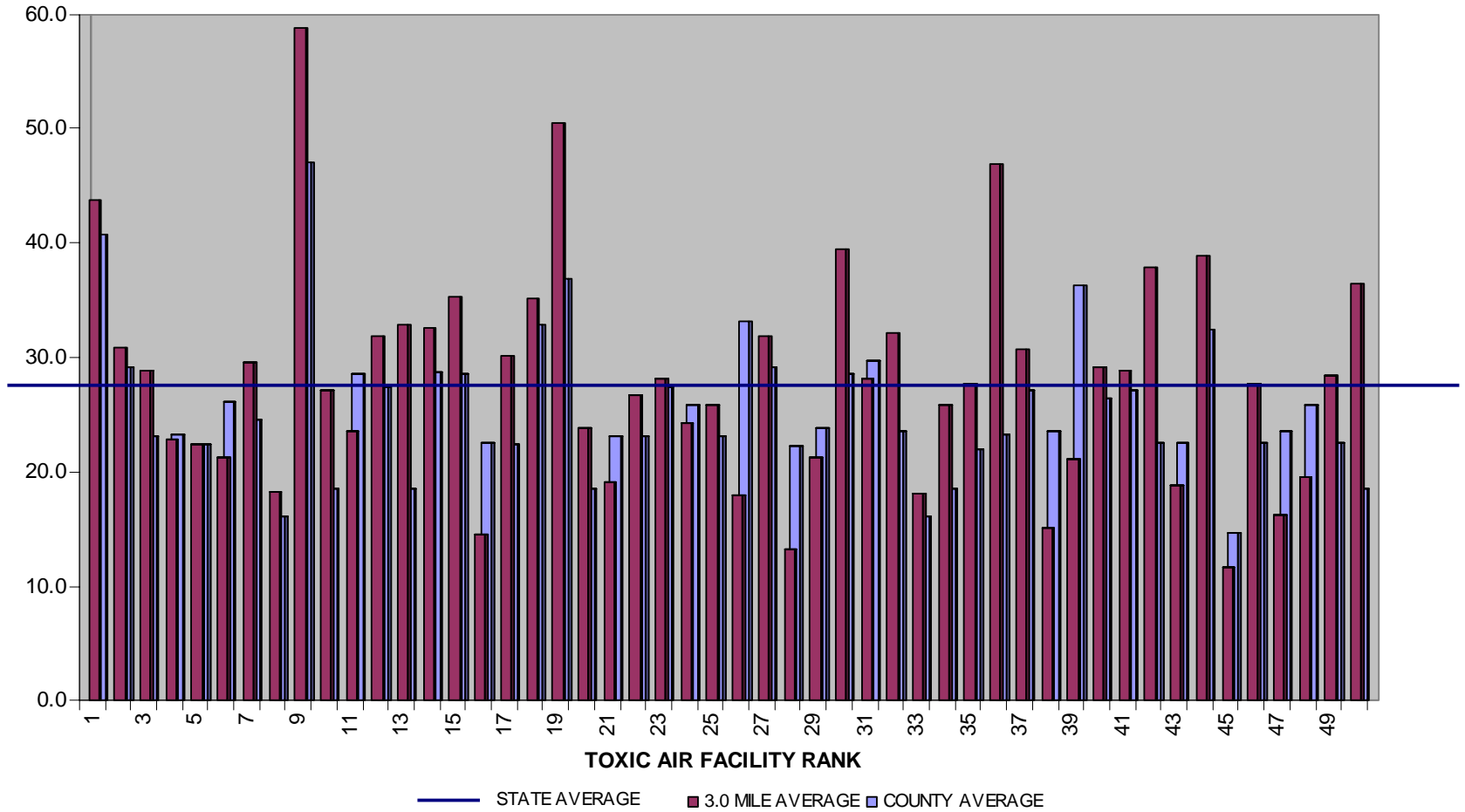
**PERCENTAGE HOUSEHOLDS WITH INCOME UNDER \$15000  
WITHIN 0.5 MILES OF TOP 50 TOXIC AIR POLLUTION FACILITIES IN ALABAMA**



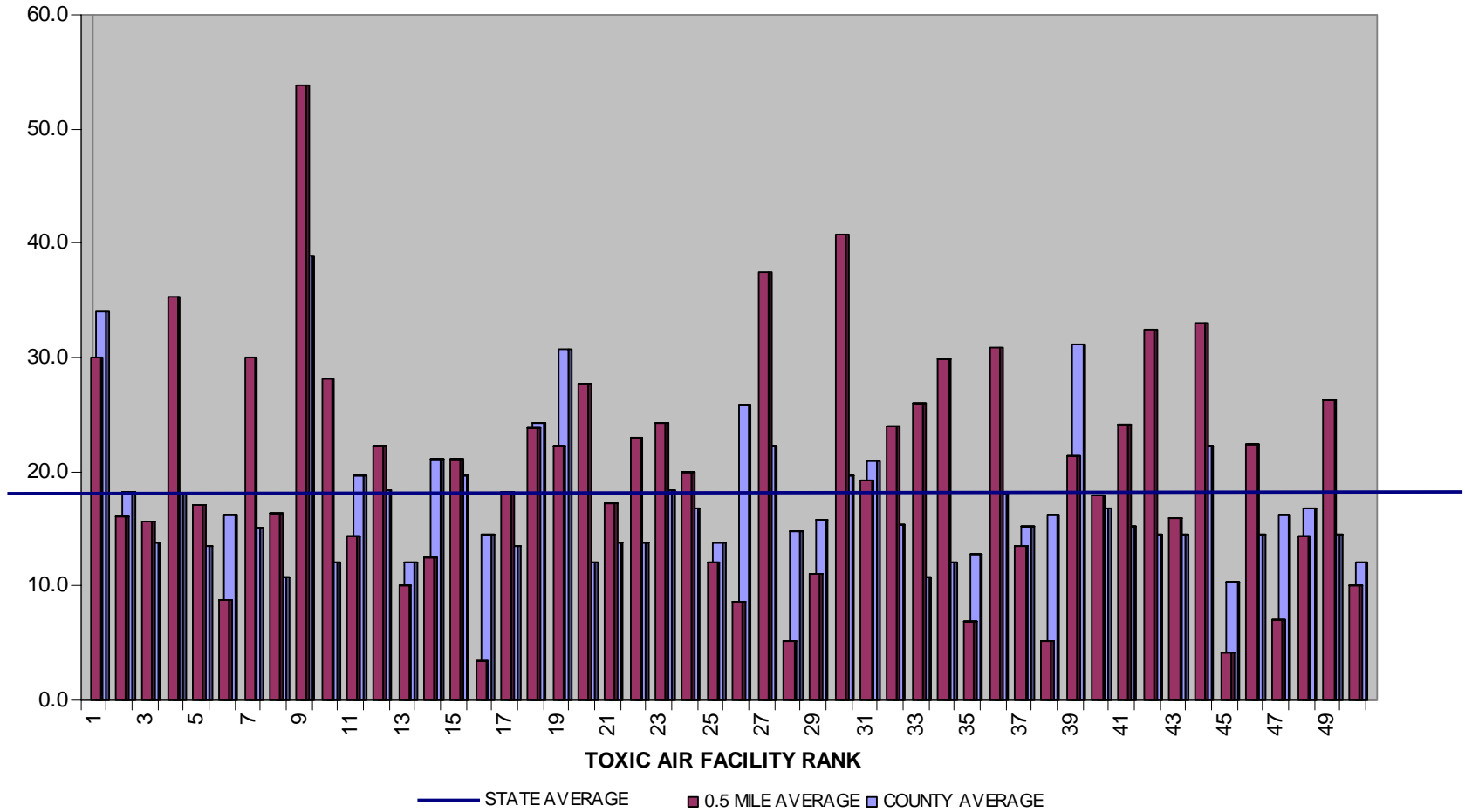
**PERCENTAGE HOUSEHOLDS WITH INCOME UNDER \$15000  
WITHIN 1.0 MILES OF TOP 50 TOXIC AIR POLLUTION FACILITIES IN ALABAMA**



**PERCENTAGE HOUSEHOLDS WITH INCOME UNDER \$15000  
WITHIN 3.0 MILES OF TOP 50 TOXIC AIR POLLUTION FACILITIES IN ALABAMA**

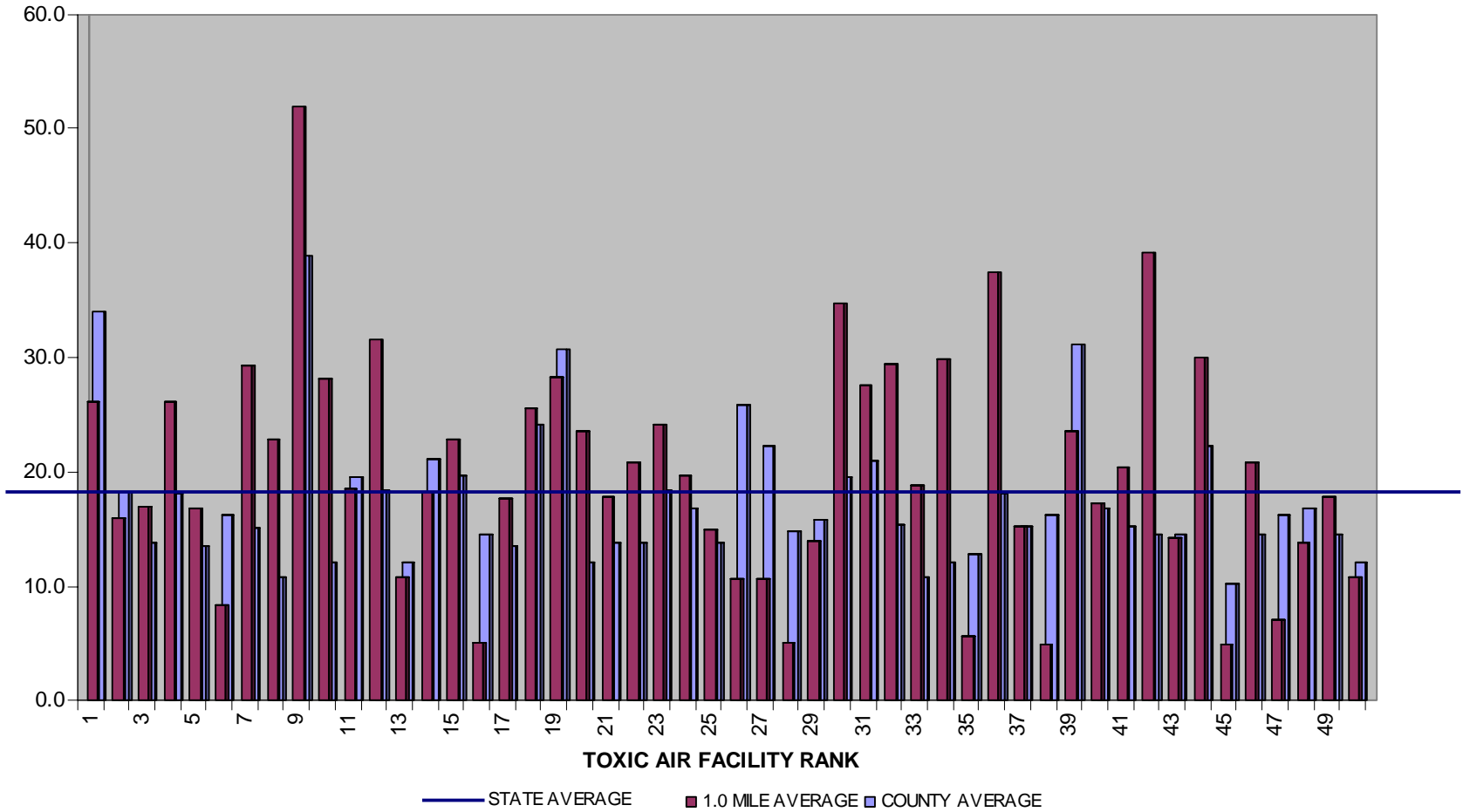


**PERCENTAGE POPULATION WITH INCOME BELOW POVERTY LEVEL  
WITHIN 0.5 MILES OF TOP 50 TOXIC AIR POLLUTION FACILITIES IN ALABAMA**

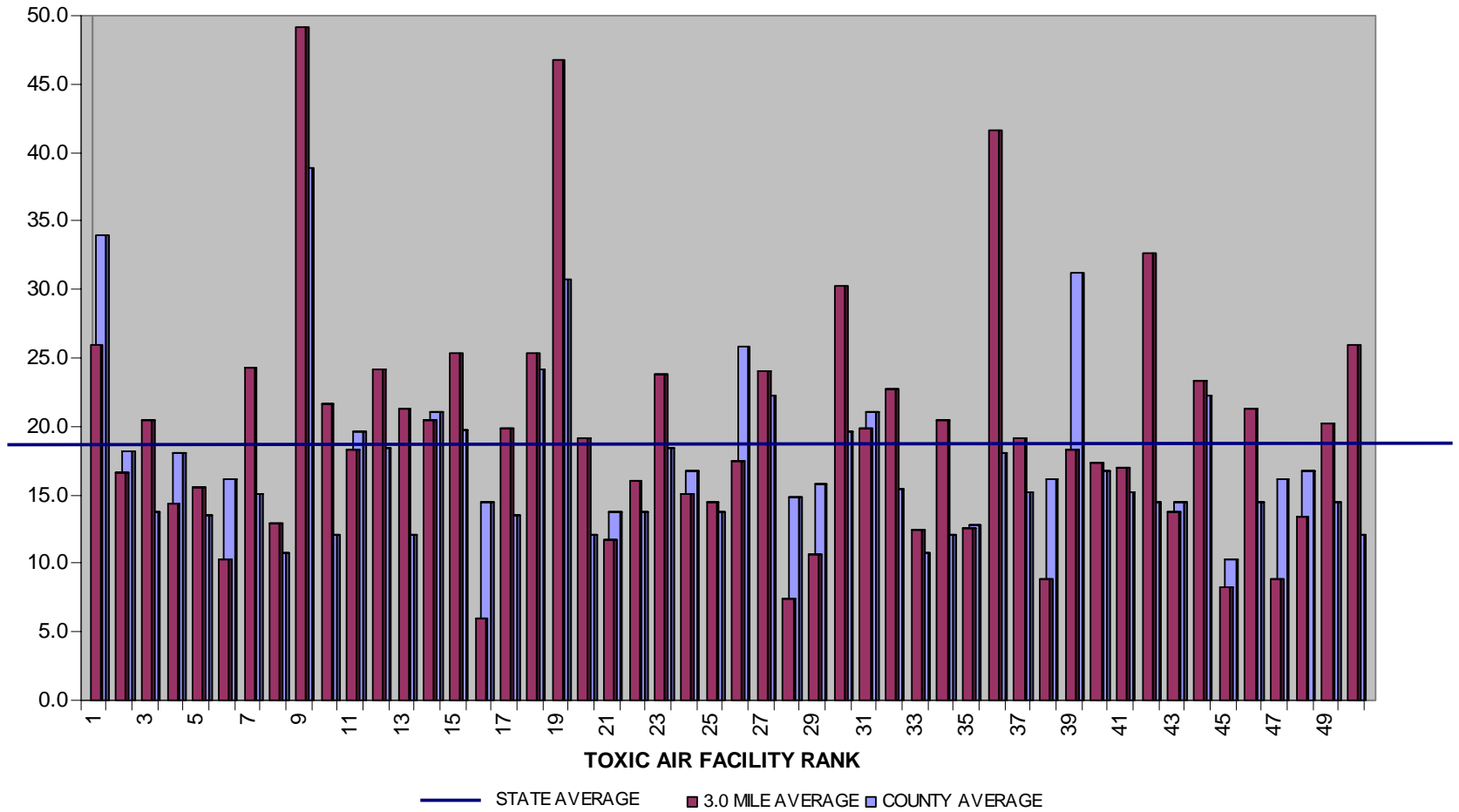




**PERCENTAGE POPULATION WITH INCOME BELOW POVERTY LEVEL  
WITHIN 1.0 MILES OF TOP 50 TOXIC AIR POLLUTION FACILITIES IN ALABAMA**



**PERCENTAGE POPULATION WITH INCOME BELOW POVERTY LEVEL  
WITHIN 3.0 MILES OF TOP 50 TOXIC AIR POLLUTION FACILITIES IN ALABAMA**



TOP 50 TOXIC AIR POLLUTION FACILITIES IN ALABAMA

| NUMBER OF FACILITIES WHERE MINORITY POPULATION<br>SURROUNDING FACILITY EXCEEDS 35.6%<br>(1.2X STATE-WIDE AVERAGE OF 29.7%) |             |             |
|--|-------------|-------------|
| 3.0 Miles  | 1.0 Miles   | 0.5 Miles   |
| 24/50 (48%)  | 23/50 (46%) | 24/50 (48%) |

| NUMBER OF FACILITIES WHERE LOW INCOME (LESS THAN \$15,000)<br>HOUSEHOLDS SURROUNDING FACILITY EXCEEDS 27.0%<br>(1.2X STATE-WIDE AVERAGE OF 22.5%) |             |             |
|---|-------------|-------------|
| 3.0 Miles   | 1.0 Miles   | 0.5 Miles   |
| 28/50 (56%)   | 27/50 (54%) | 26/50 (52%) |

| NUMBER OF FACILITIES WHERE POVERTY POPULATION<br>SURROUNDING FACILITY EXCEEDS 18.8%<br>(1.2X STATE-WIDE AVERAGE OF 15.7%) |             |             |
|---|-------------|-------------|
| 3.0 Miles   | 1.0 Miles   | 0.5 Miles   |
| 26/50 (52%)   | 24/50 (48%) | 26/50 (52%) |