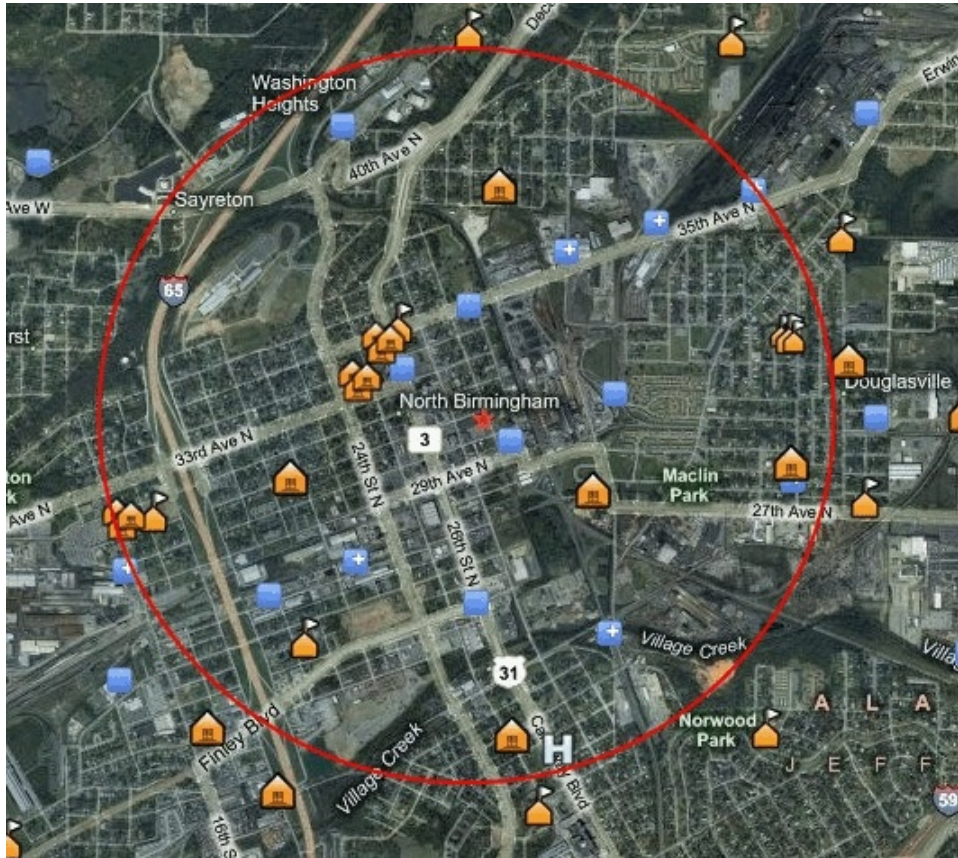



North Birmingham Monitor Site
 3009 28th Street North, Birmingham, Alabama
 Lat. N 33.55278 Long. W 86.8150



CHEMICAL	CANCER RISK (in 1,000,000)
1,3-Butadiene	5.46
Acetaldehyde	3.70
Arsenic	10.3
Benzene	33.1
Benzo (a) pyrene	3.37
Cadmium	17.5
Carbon Tetrachloride	10.2
Naphthalene	12.3
p-Dichlorobenzene	3.86
Tetrachloroethylene	1.78
Others	3.38
Cumulative	105

CHEMICAL	NON-CANCER RISK (≤ 1.0)
Acrolein	41.2
Manganese	1.29

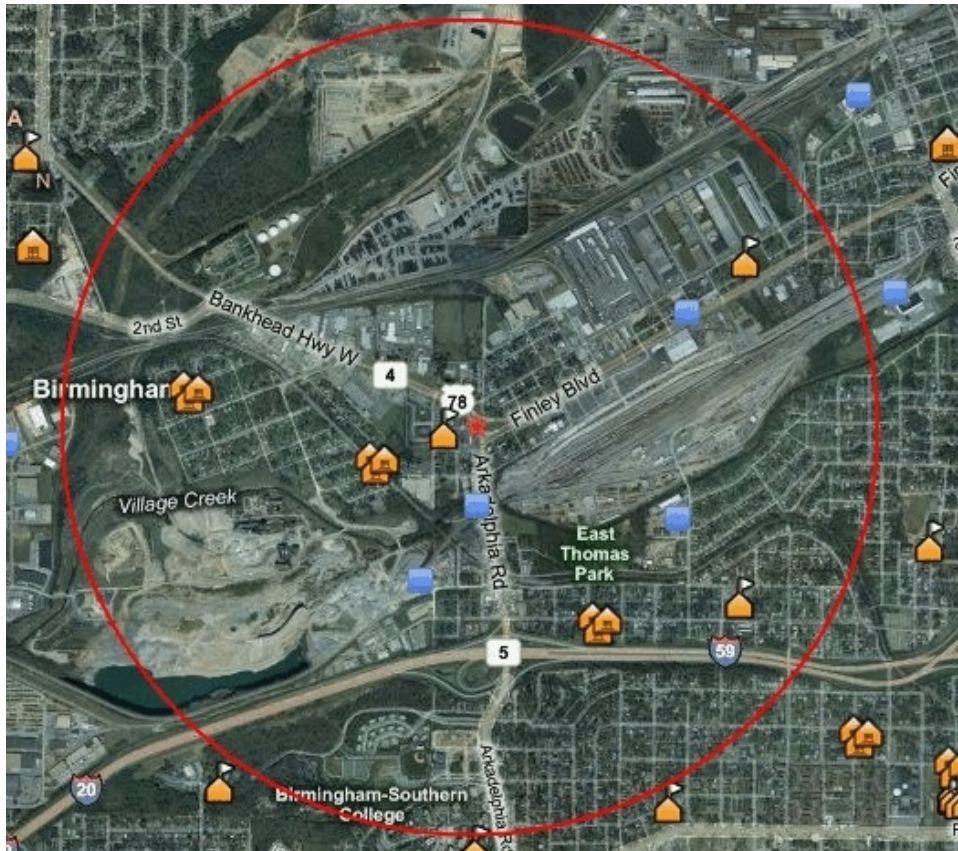
-  Air emissions (AFS)
-  Hospitals
-  Schools
-  Worship Places

Calculated risks from *Birmingham Air Toxics Study*, Jefferson County Department of Health (February 2009), reproduced at <http://www.enviro-lawyer.com/BATS.pdf>. Data collected by Jefferson County Health Department, July 2005 to June 2006. Graphics generated using EPA's EJView at <http://epamap14.epa.gov/ejmap/entry.html>. Red circle is 1.0 mile from monitor site. Estimated population within 1.0 mile of monitor site is 7,047 (97% African-American). Population and demographic estimates generated using EPA's EJView. Prepared by Law Office of David A. Ludder, PLLC for Conservation Alabama Foundation.

East Thomas Monitor Site

841 Finley Avenue Bypass W, Birmingham, Alabama

Lat. N 33.52944 Long. W 86.850278



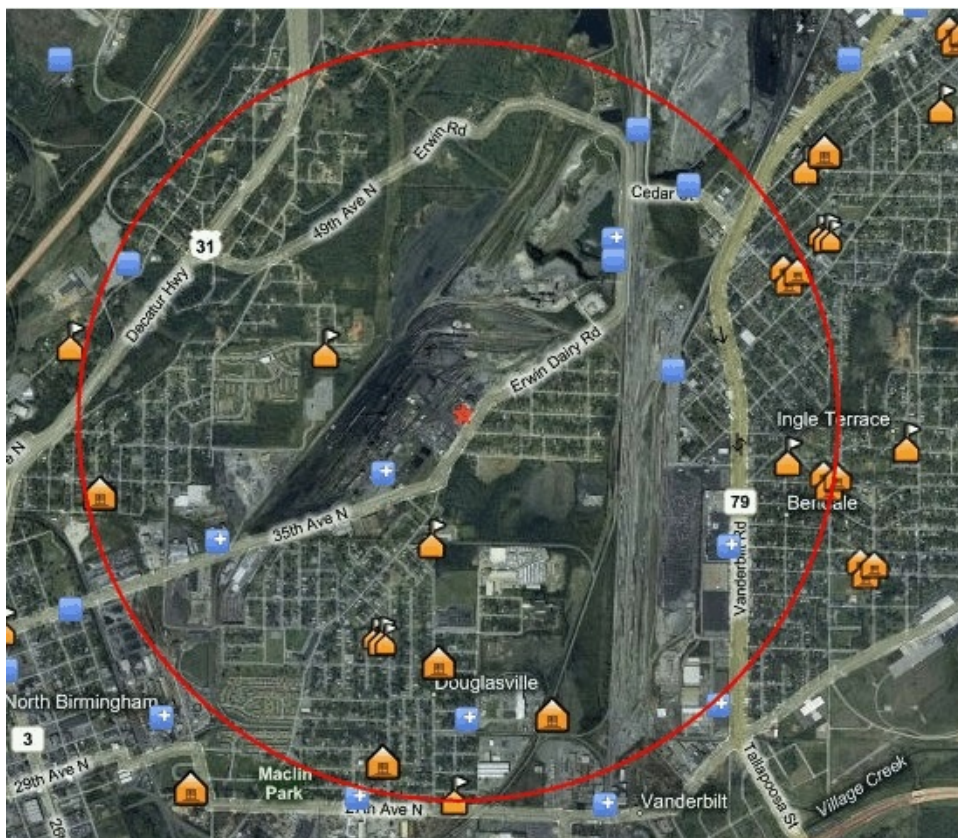
CHEMICAL	CANCER RISK (in 1,000,000)
1,3-Butadiene	8.54
Acetaldehyde	4.62
Arsenic	7.44
Benzene	26.0
Carbon Tetrachloride	10.4
Naphthalene	11.6
p-Dichlorobenzene	3.44
Tetrachloroethylene	2.75
Others	3.11
Cumulative	77.9

CHEMICAL	NON-CANCER RISK (≤ 1.0)
Acrolein	39.9
Manganese	1.24

- Air emissions (AFS)
- Hospitals
- Schools
- Worship Places





Calculated risks from *Birmingham Air Toxics Study*, Jefferson County Department of Health (February 2009), reproduced at <http://www.enviro-lawyer.com/BATS.pdf>. Data collected by Jefferson County Health Department, July 2005 to June 2006. Graphics generated using EPA's EJView at <http://epamap14.epa.gov/ejmap/entry.html>. Red circle is 1.0 mile from monitor site. Estimated population within 1.0 mile of monitor site is 4,371 (88% African-American). Population and demographic estimates generated using EPA's EJView. Prepared by Law Office of David A. Ludder, PLLC for Conservation Alabama Foundation.

Shuttlesworth Monitor Site
 4113 Shuttlesworth Drive, Birmingham, Alabama
 Lat. N 33.56528 Long. W 86.79639



CHEMICAL	CANCER RISK (in 1,000,000)
1,3-Butadiene	7.35
Acetaldehyde	3.56
Arsenic	34.9
Benzene	62.3
Benzo (a) pyrene	3.29
Beryllium	1.02
Carbon Tetrachloride	9.82
Naphthalene	19.4
p-Dichlorobenzene	5.30
Tetrachloroethylene	1.77
Others	3.62
Cumulative	152

CHEMICAL	NON-CANCER RISK (≤ 1.0)
Acrolein	53.1
Manganese	3.79

<ul style="list-style-type: none">  Air emissions (AFS)  Hospitals  Schools  Worship Places 	<p>Calculated risks from <i>Birmingham Air Toxics Study</i>, Jefferson County Department of Health (February 2009), reproduced at http://www.enviro-lawyer.com/BATS.pdf. Data collected by Jefferson County Health Department, July 2005 to June 2006. Graphics generated using EPA's EJView at http://epamap14.epa.gov/ejmap/entry.html. Red circle is 1.0 mile from monitor site. Estimated population within 1.0 mile of monitor site is 4,127 (86% African-American). Population and demographic estimates generated using EPA's EJView. Prepared by Law Office of David A. Ludder, PLLC for Conservation Alabama Foundation.</p>
---	--

Providence Monitor Site
 1801 Bruce Shaw Road, Jefferson County, Alabama
 Lat. N 33.45972 Long. W 87.30556



CHEMICAL	CANCER RISK (in 1,000,000)
1,3-Butadiene	1.10
Acetaldehyde	5.24
Arsenic	3.86
Benzene	4.87
Carbon Tetrachloride	9.94
p-Dichlorobenzene	3.17
Others	1.50
Cumulative	29.7

CHEMICAL	NON-CANCER RISK (≤ 1.0)
Acrolein	25

<ul style="list-style-type: none"> Air emissions (AFS) Hospitals Schools Worship Places 	<p>Calculated risks from <i>Birmingham Air Toxics Study</i>, Jefferson County Department of Health (February 2009), reproduced at http://www.enviro-lawyer.com/BATS.pdf. Data collected by Jefferson County Health Department, July 2005 to June 2006. Graphics generated using EPA's EJView at http://epamap14.epa.gov/ejmap/entry.html. Red circle is 1.0 mile from monitor site. Estimated population within 1.0 mile of monitor site is 69 (0% African-American). Population and demographic estimates generated using EPA's EJView. Prepared by Law Office of David A. Ludder, PLLC for Conservation Alabama Foundation.</p>
---	--